

MT4201

Global Tracker for Management of Powered Mobile Assets

Mobilogix MT4201 is a Bluetooth-enabled cellular IoT gateway device featuring robust construction, multiple I/O and embedded GPS.



SMALL & POWERFUL

The MT4201 enables track and trace workflows with installs as simple as 2 wires. With an on-board antenna and IMU, this gateway device is ready to go out of the box for powered asset traceability.

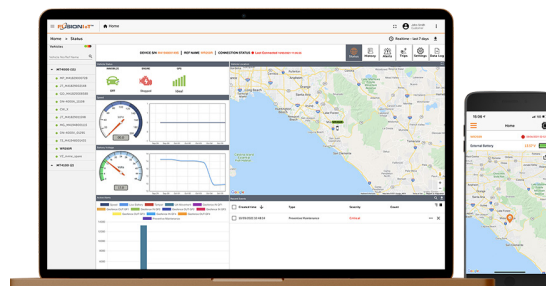
VERSATILE

With multiple I/O configurations the MT4201 can meet various needs including: Ignition relay, starter disable, temperature probes, door monitor, emergency button and other general I/O needs.

GROWS WITH YOUR NEEDS

Add BTM250 beacons to your solution to monitor multiple assets or zones with all data recorded at each BTM250 available in reports with the FusionIoT™ cloud platform via the MT4201 cellular backhaul.

Pair MT4201 with the FUSIONIoT™ Platform Plus Connectivity for a scalable solution that delivers enhanced control in configuring, monitoring and managing assets.



PRODUCT DETAILS

MT4201



Use cases include track, trace and recovery of automobiles, motorcycles, trailers, and other powered mobile assets

FEATURES AND BENEFITS

- Bluetooth Beacon Gateway
- Vehicle Trip Tracking
- IP67 enclosure for rugged field use
- Starter-disable; Custom Alerts
- eBike Compatible

SERVICES

- FusionIoT™ Integration
- 3rd Party Platform Integration
- FOTA (over-the-air) Updates
- Single-source Reporting of Actionable Data

Technical Specifications

Antenna	Internal
Cellular Service	LTE (Cat-M1, NB-IoT), Global 2G GPRS Quad Band
GNSS	GPS, Glonass
Bluetooth	Version 5.1
Sensors	Full IMU
Power Input	8-80 VDC
Backup Battery	3.7 V Li-ion (Rechargeable)
Enclosure	ABS Plastic, IP67 rating
Dimension	98x51x20mm
I/O	3 input, 3 output
Operating Temp	-40°C to +85°C
Regulatory	FCC/IC, ANATEL, PTCRB
Operator	Verizon
Safety	RoHS 2
Warranty	1 year device material and parts